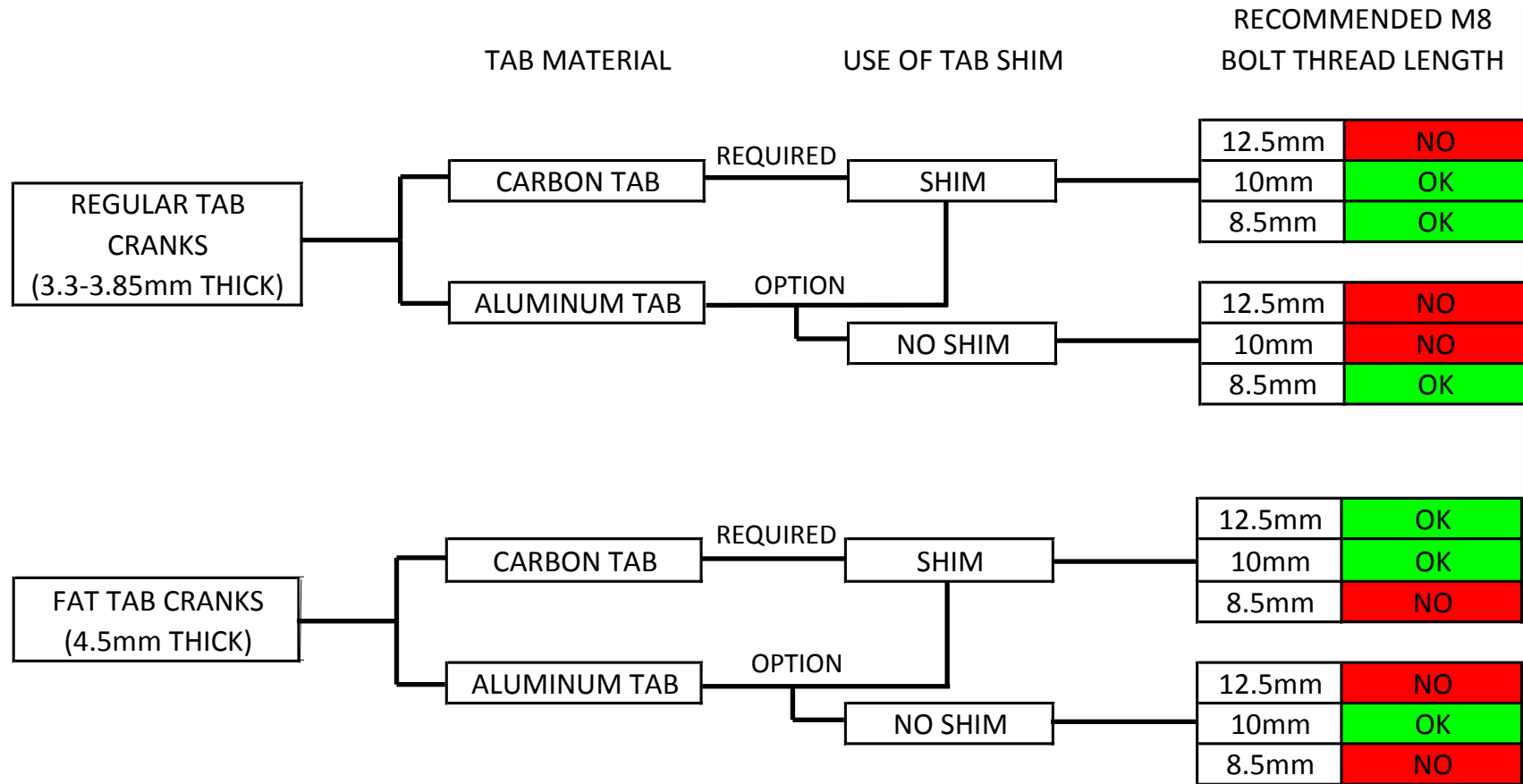
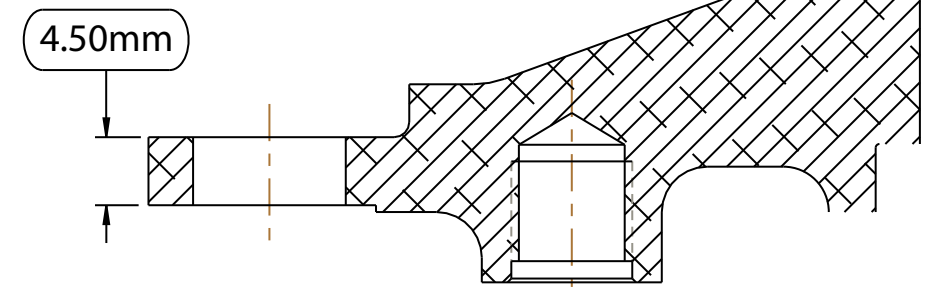




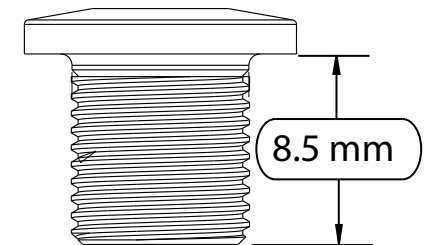
### 30T NARROW WIDE RING HARDWARE COMPATIBILITY CHART

FIRST DETERMINE IF YOU HAVE A REGULAR TAB THICKNESS (BETWEEN 3.3-3.85mm) CRANK OR FAT TAB CRANK (4.5mm). MOST CRANKS ARE REGULAR THICKNESS. THEN FOLLOW THE FLOW CHART TO DETERMINE WHAT LENGTH OF BOLT IS RECOMMENDED AND IF YOU WANT TO USE THE TAB SHIMS (REQUIRED FOR CARBON TABS, OPTIONAL ON ALUMINUM)

FAT TAB CRANKS (RACE FACE ATLAS EXI, SIXC - POST MY2010, SHIMANO SAINT)



RACE FACE TAB SHIM  
PART NUMBER - D40331



COMPATABLE RACE FACE BOLT PART NUMBERS	M8 BOLT THREAD LENGTH		
	12.5mm	10mm	8.5mm
	A10059 - HEX STEEL	A10070 - TORX AL	A10012 - HEX AL A10014 - HEX STEEL A10075 - TORX AL